



Come, join the Future

**DESIGN
ENGINEERING
MANAGEMENT**

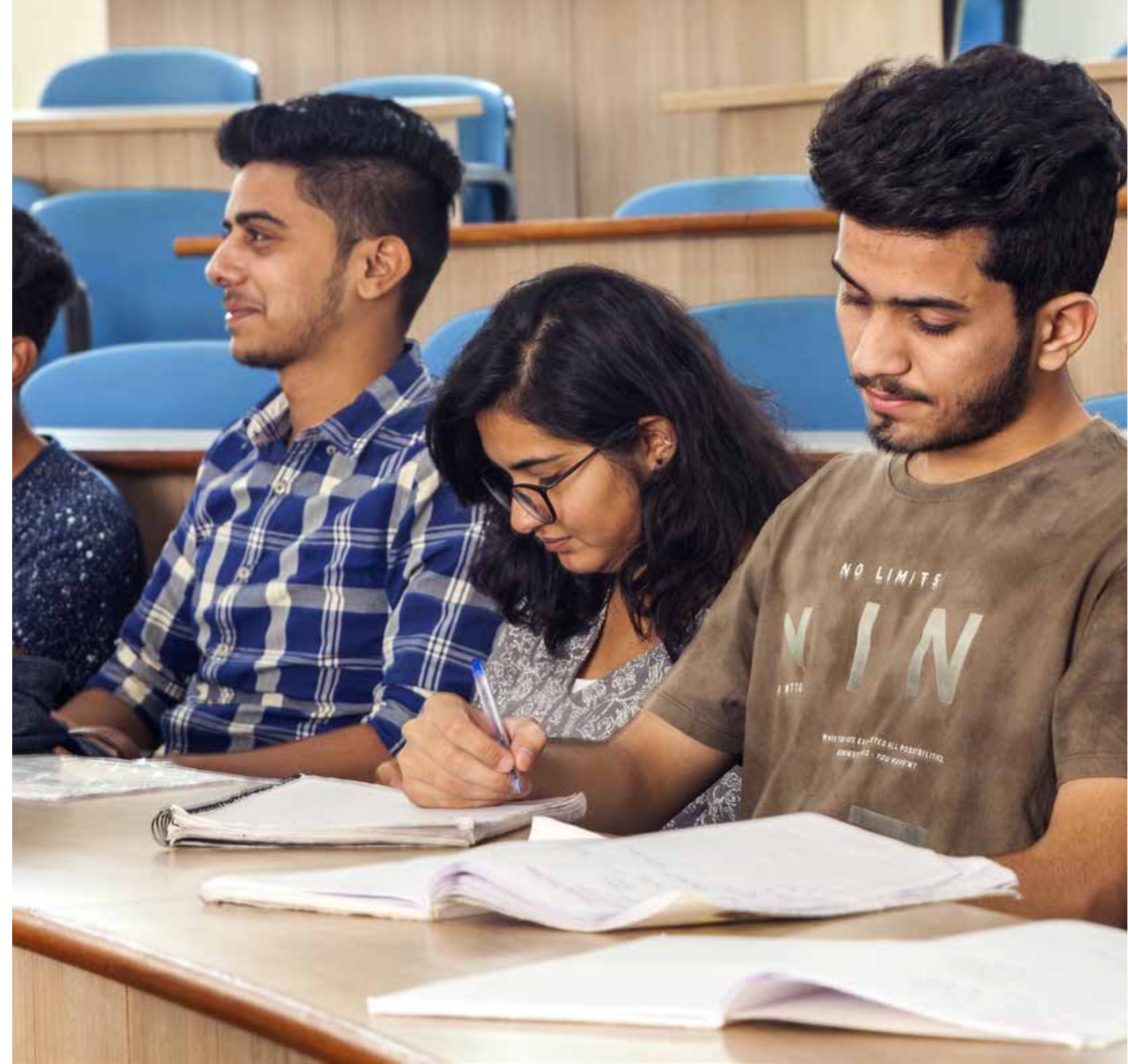
PROSPECTUS 2020



**The world of work is
changing rapidly.**

**So is the world of business,
technology and jobs.
Education must take bold
strides to walk towards a
new landscape.**

At JKLU, we are excited about shaping this horizon and are committed to creating professionals of the future.





“We offer our students an education that is contemporary, relevant and combines the best of academic pedagogy along with application-led practical experience.”

We as an Industrial Conglomerate are strongly committed to education and meritocracy in the country for more than 100 years.

Higher education is the foundation of a productive career and fulfilling life. Its purpose is to help students discover their strengths, build skills that enable them to achieve their goals, and foster relationships with peers and faculty that will continue to support them over the years.

At JK Lakshmipat University, we are passionate about building a high-quality institution that enables students to embark on a journey of transformation. Our rigorous pedagogy, committed faculty body and stellar academic advisory board ensure that our curriculum, teaching methods and learning outcomes are consistently being benchmarked against leading institutions.

Even as we are proud of our early achievements, we have ambitious plans for growth.

Much as we are excited about our student's growth, we as an institution as well, have an unyielding zeal for continuous improvement and progress.

It is a pledge we make to our students. Join us to live your change.

Shri Bharat Hari Singhania

Chancellor JKLU

President, JK Organisation



“JKLU is well prepared to create a new cadre of professionals from, and for, India, who will go on to create, manage and transform businesses and organisations.”

India's economic growth is scripting an exciting narrative. At the centre of this story are the country's youth, and the potential they have to accelerate the pace of economic gains and social progress. To be a force for change though, their aspirations need to be carefully nurtured.

JKLU provides a vibrant learning environment for ambitious and driven students who are ready to embark on careers that will shape our future. Here, we offer them a committed faculty and an institutional pledge to deliver a future-ready education that prepares them for the challenges and disruptions of the modern workplace. Our renewed effort to offer a contemporary and global education has been reaffirmed by strong and new partnerships, as well as a fresh blueprint for our curriculum and pedagogy.

We welcome our students to experience and benefit from this dynamism.

Dr. R L Raina

Vice Chancellor, JKLU

WE ARE REIMAGINING EDUCATION



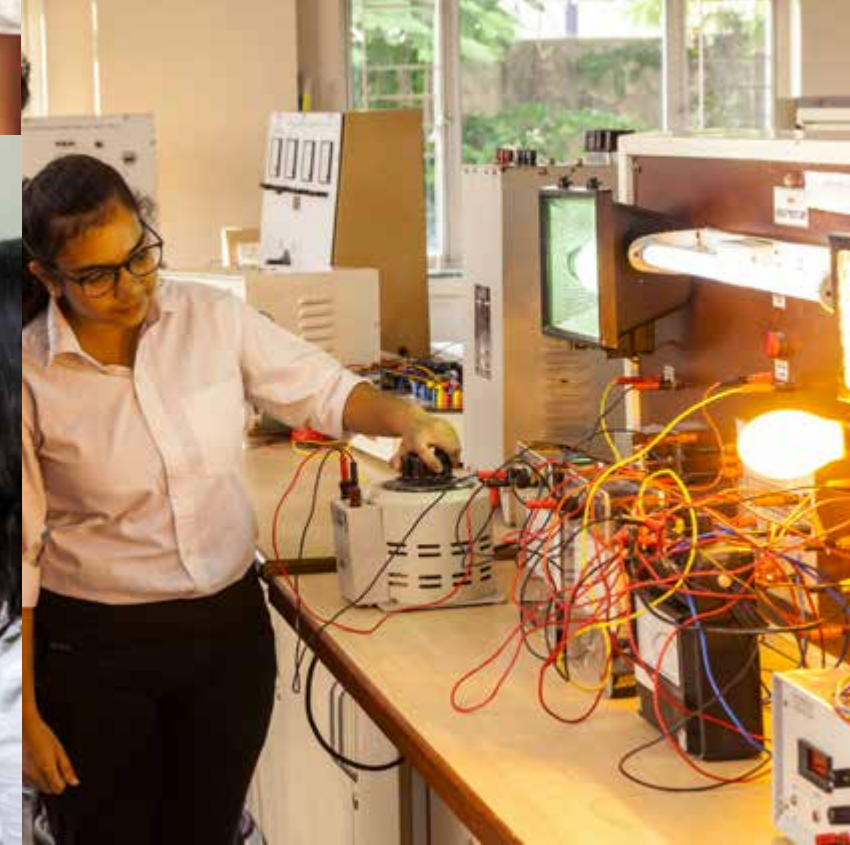
To decrease migration

To increase economic

- Lack of development.
- Lack of Facilities.
- Lack of Good Hospitals.
- Lack of

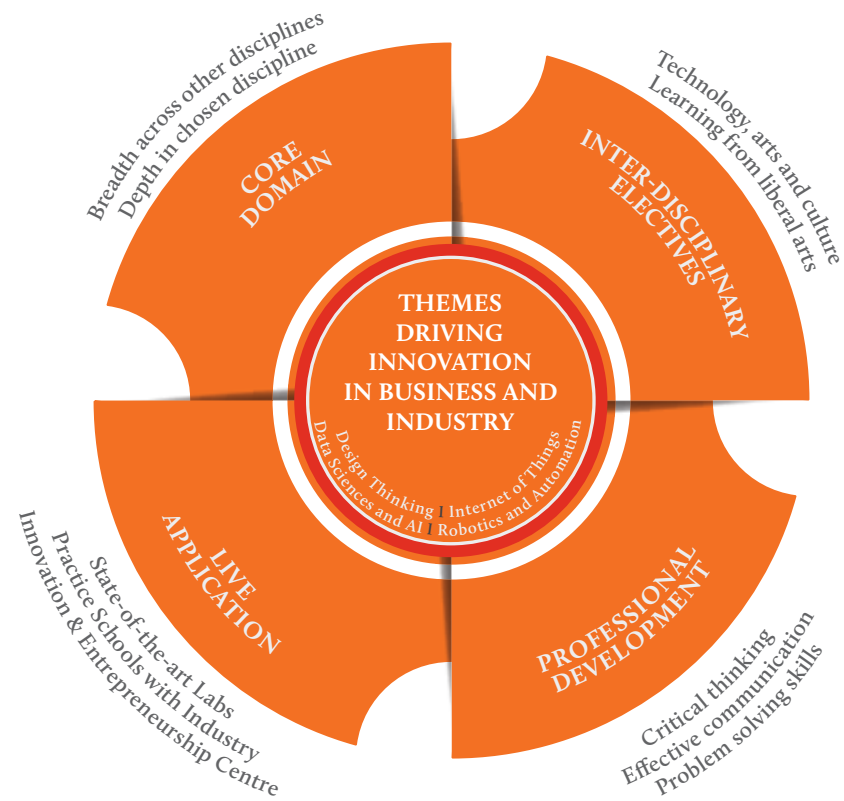
Embedding it with **entrepreneurial** and **dynamic** thinking. Seeding it with **curiosity** and **technology**. Introducing new ways of learning, as well as critical new skills to learn.

**Join us as we build the
country's most innovative
higher education institution.**



Learning @ JKLU

A carefully designed holistic approach built around innovative themes and learning-by-doing, that provides depth in core domain along with breadth of perspective to develop students into successful professionals.



A Future-Ready & Technology-led Education

Learn how to learn.

Learn how to read, write and think.

Learn to communicate and introspect.

Be life ready, not just job ready.



EXPERIENTIAL & STUDENT-CENTRIC LEARNING



Learn by doing, by experimenting, by applying classroom concepts to real-world challenges.



Collapse boundaries.

Learn from the best professors and a world-class curriculum, assisted by high-quality facilitators, practitioners and teaching assistants on campus.

Explore a larger and more exciting universe of courses & pedagogy.

MULTIDISCIPLINARY PERSPECTIVES

Gain and build insights about the world around you.

Develop perspective and awareness with modules,

discussions and seminars on economics, politics, history, social science and development.

Delve into how politics, business and society are interlinked. Or, how philosophy influences technology.

Develop your perception.

AUTONOMY AND FLEXIBILITY

Enjoy the freedom, and the responsibility, to change your mind, to follow your curiosity or pursue a new interest. Take charge of your learning. Choose seamlessly from courses, concentrations and specialisations.



ACADEMIC INFRASTRUCTURE

Academic Laboratories

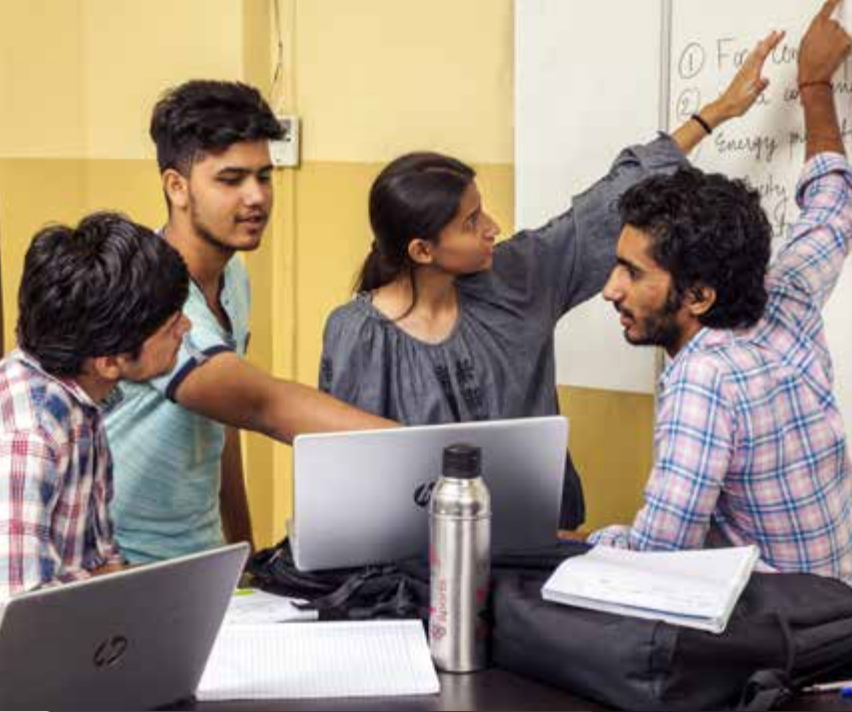
From basic workshops to specialized energy lab and innovation lab, JKLU has 54 state of the art labs to enable access to best tools for their projects and research.

Makerspace

Makerspace is a collaborative work space for making, learning, exploring and sharing. The purpose of makerspace at JKLU is to enable a user or individual to bring ideas to a tactile prototype stage so it can be tried and tested. Makerspace has a vast variety of industrial and high-tech tools to assist and enable users to create and manipulate a wide range of materials like wood, bamboo, plastics, acrylic, soft & hard metal in wire or sheet form.

Classrooms and Studios

From the iconic library building that is a source of pride for everybody at JKLU, the campus has well-appointed amphitheater-style seminar rooms, classroom studio outfitted with audio-visual equipment, video conferencing facilities and internet services. The academic infrastructure recognises that students today learn through a variety of media, and is well-prepared to foster these interactions.



INDUSTRY INTERACTIONS

Benefit from a close and sustained dialogue with industry. Leverage the advantages of mentorship, counselling and work opportunities.

Industry collaborations



IBM
Concentrations in Big Data & Analytics, Information Security & Cloud Computing



ISRO
Centre for IRNSS Navigation Receiver for Field Trial & Data Collection



Texas Instruments Innovation Centre
Centre of Excellence for IoT and Instrument Innovation



Moody's Analytics
Concentrations in Financial Modeling and Analytics



Robotic Process Automation
Concentrations in Software Engineering and Robotic process animation



Microsoft IT Academy
Access to Microsoft IT academy tools and softwares

Industry Mentors

(Partial list)

Debraj Tripathy
Former Managing Director, Media-Com South Asia

Jay Dutta
Sr Vice President-User Experience, MakeMyTrip Group;
Founder/Curator- DesignUp Conference; Venture Advisor-Product Design, SAIF Partners

Jishnu Changkoti
Stanford Seed Consultant, Ex VP, Sales & Marketing, Zydus

Margie Shastry
Director, Bharatiya Bhasha Sanskriti Sansthan, Ahmedabad. Scriptwriter & editor- Chitra Katha, Tinkle & Stories of Courage etc

Rajiv Kapuria
Global Business Leader & Board member Advisor, Deloitte USA

Raghava Rao
Vice President & CFO Amazon India

Ravi Chandran
Co-Founder & COO Ellora Health Technologies ; IIT Bombay, IIM Calcutta

Sanjay Srivastava
Board Of Director, Origins by Mahindra World City; IIM Calcutta, Harvard Business School.

Saurabh Deb
Chief User Experience Designer- Advanced User Experience Solutions,Samsung Design, NID Alumnus

Samarth Gupta
Technical Solutions and Industrial Design Specialist, Autodesk; M.Des, IIT Delhi, B.Tech, IIT Dhanbad

Vijay Deshpande
VP & Head of Human Resources, JK Tyre & Industries

Vikram Rao
Former Asst. Director, Colgate Palmolive MBA, IIM Calcutta

Vishal Malik
Director - Operations, McKinsey & Company

ACADEMIC COLLABORATIONS



University of Florida, Gainesville, USA

Ranked 8th among Public Universities in the US, 2019



University of Massachusetts, Amherst, USA

Ranked 26th among Public Universities in the US, 2019



Olin College of Engineering Boston, USA

Ranked among top 3 undergraduate engineering programmes in the US, 2019



Edinburgh Napier University, UK

Ranked 10th among modern Universities in the UK, 2020



St. Cloud State University, Minnesota, USA

One of the largest Universities in Minnesota



GLOBAL NETWORK OF ACADEMIC RELATIONSHIPS



• Amsterdam University of Applied Sciences, Netherlands • Ball State University, USA
 • Bond University, Australia • Boston College, USA • Cornell University, USA • Coventry University, UK • Culs University, The Czech Republic • Federation University, Australia
 • Hanyang University, South Korea • Hong Kong University of Science and Technology, Hong Kong • Olin College of Engineering, USA • Simon Bolivar University, Venezuela
 • St. Cloud State University, USA • St. Petersburg Polytechnic University, Russia • St. Petersburg State University, Russia • Syracuse University, USA • Széchenyi István University, Hungary • University College London, UK • University of Florida, USA • University of Houston, USA • University of Leeds, England • University of Massachusetts, USA • University of Pennsylvania, USA • University of Texas, USA • University of Toronto, Canada • University of Wales, UK • University of Warwick, England • Vatel Hotel and Tourism Business School, Bordeaux, France • University of Kharazmi, Tehran, Iran • IE University, Madrid • Chulalongkorn University, Bangkok, Thailand • Sapienza University of Rome, Italy • Slovak Technical University (STU), Slovakia • California State University, USA • MIT USA • Cambridge University, England



DISTINGUISHED VISITORS & AWARDEES

Regular Talks, Lectures and interactions with experts and leaders including **Manmohan Singh**, *Former Prime Minister of India*; **Pranab Mukherjee** *Former President of India*; **Kailash Satyarthi**, *2014 Nobel Peace Prize*; **Lord Meghnad Desai**, *Emeritus Professor London School of Economics*; **K. Kasturirangan**, *Padma Vibhushan*; & **Mrityunjay Athreya**, *Padma Bhushan* amongst many from different walks of life enrich our university community and give our students an opportunity to gain from & develop broad perspectives on issues that are important for the world.

Alasdiar Roberts

Director, School of Public Policy and Professor of Political Science, University of Massachusetts Amherst

Anuradha Annaswamy

Senior Research Scientist Department of Mechanical Engineering & Director - Active Adaptive Control, MIT

M.H. Bala Subrahmanya

Professor, Indian Institute of Science

Santosh Mehrotra

Professor of Economics, Jawaharlal Nehru University; Former Director General, Institute of Applied Manpower Research, Planning Commission, Govt. of India

Vikas Satwalekar

Professor, Mentor and Ex-Director of NID Ahmedabad, Vikas is one of the Design Gurus of India

Virender Singh Chauhan

Executive Chairman of National Assessment and Accreditation Council (NAAC)

Anil D Sahasrabudhe

Chairman, All India Council For Technical Education (AICTE)

Shubhashis Gangopadhyay

Founder & Research Director, India Development Foundation; Former Advisor to Finance Minister, Govt. of India

Amit Sheth

Founding Director - Artificial Intelligence Institute, University of South Carolina; Cofounder and Chief Advisor ezDI, LLC

Ray La Raja

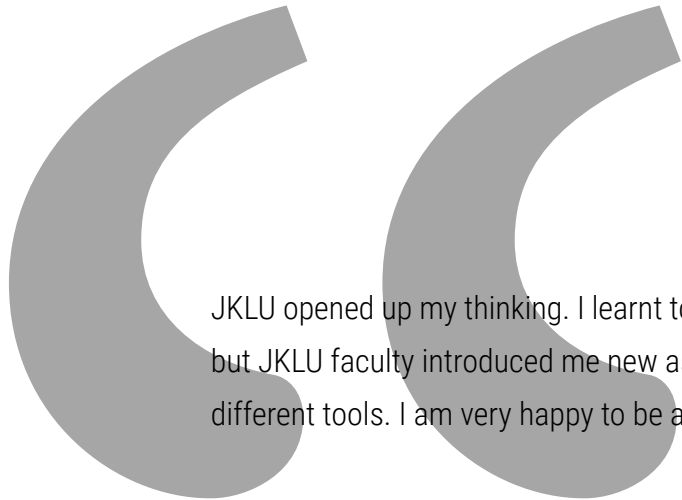
Professor, Political Science, University of Massachusetts Amherst

M H Dalmia

President, OCL India Ltd.

Mandayam A Srinivasan

Founding Director - Touch Lab, MIT USA; Director - UCL Touch Lab, London, UK; VAJRA Professor, IIT Madras, India.



JKLU opened up my thinking. I learnt to learn from making mistakes. I was never into digital stuff but JKLU faculty introduced me new aspects of design like digital drawing along with the uses of different tools. I am very happy to be a part of JKLU's Institute of Design."

Khushi Garg | B.Des. Class of 2023

Student

.....

The best part about JKLU that I like, is the way students are being provided with the quality education and equal opportunities to interact with the respective faculty which helps the students in learning and boosting their confidence to get the best placements. JKLU gave me a good education and didn't let me hide behind the shadows and I will be always thankful for it."

Sanidhya Srivastva | B.Tech. Graduate, Class of 2019

MU Sigma

.....

Being a part of Pinnacle MBA programme has given me an exclusive exposure of the industry. It has been a wonderful and indeed beyond boundaries experience for me. JK Lakshmipat University discovers, skills are developed, confidence is built and dreams are realized. I have always found the faculty by my side for help and support."

Ayushi Dasani | Pinnacle MBA, Class of 2020

Lido Learning

"I was impressed by the infrastructure, facilities and more importantly passion of the leadership to give quality education through a variety of innovative methods of learnings.

Anil Sahsrabudhe | Chairman, All India Council for Technical Education (AICTE)

.....

"Inspirational place, I am sure it is going to do great work in education.

Vikas Satwalekar | Former Director of NID, Mentor, Graphic Designer

.....

"A commendable attempt at redefining education. May this attempt come out with something truly impactful & worthwhile."

Ambrish Kumar | IAS; Commissioner & Special Secretary, DoIT&C, Govt of Rajasthan



INSPIRING LEADERSHIP

Get inspired by a team of accomplished academics who are committed to bring to students the best that the world can offer

ACADEMIC LEADERSHIP

Dr. RL Raina

Vice Chancellor & Director,
Institute of Management



A Fulbrighter and SIS Fellow, Dr.

Raina is a former Dean of IIM

Lucknow and a Professor of Communication with nearly 4 decades of experience in academia and institution-building. A distinguished academician, his research contributions include 20 bestselling books, 75 research papers in national and international journals and 100+ papers at national/ international conferences and seminars.

Dr. Sanjay Goel

Director, Institute of Engineering
and Technology



An alumnus of IIT Delhi and BITS

Pilani, Dr. Goel has over 32 years of inter-disciplinary work experience, including as faculty of Computer Science Engineering at NSIT Delhi, Head of CS&IT at JIIT, Director (Multimedia) at Indira Gandhi National Centre for the Arts (IGNCA) and National Informatics Centre, Delhi.

Prof. A. Balasubramaniam

Director, Institute of Design
Alumnus of NID Ahmedabad,



Prof Bala has more than 30 years
of experience of design industry

and inter-disciplinary teaching. He is known for his work in both the industrial sector and the crafts sector having done projects with Crafts Council, DC Handicrafts and the UNDP. He has also been part of various institutions such as January Design; Oxfam; Great Britain, India; and Pride.

Dr. Jyoti Prakash CR Naidu

Dean, Research and Development



A Canadian Commonwealth

Fellow, a Defence Technology Spin-off Awardee and an IIT Alumnus, Prof Naidu has more than 30 years of experience in industrial and academic Research and Development. He brings in a vast experience of working with leading organisations in UK, USA, Canada and India.



Promit Basu
M.Des, NID; Former Design Head,
Reliance Brands Ltd.



Gustavo Sanchez
PhD, SBU Venezuela; Visiting Faculty at
Univ. of Maryland, USA



Rajlakshmi Nayak
PhD (Mechanical Engineering), IIT Madras



Vidushi Yadav
B.Des, NIFT, Delhi; M.Des,
IDC, IIT Bombay



Pushpendra Singh
PhD (Electrical Engineering), MNIT, Jaipur



Dhruv Saxena
B.Des, IICD, Jaipur,
M.Des, Domus Academy, Milan



Devika Kataria
PhD (Microelectronics), IIT Kanpur



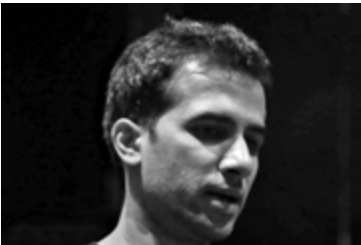
Apoorv Bamba
University of Cape Town; Founder, Coach &
Catalyst for Entrepreneurship



Umesh Gupta
PhD, M.Phil, University of Rajasthan



Amit Kumar
MSc, Cleveland State University, USA;
Former Executive, The World Bank



Gaurav Juyal
B.Des, NID; Former Host of Art Attack,
Disney India



Alasdair Roberts
Director, School of Public Policy,
UMASS Amherst



Bhargava Prajjwal Pathri
PhD (Mechanical Engineering), MNIT, Jaipur



Sonal Jain
PhD (Computer Science), Banasthali
Vidyapeeth



Satya Prakash Gupta
PhD (Mathematics), IIT Kanpur



Kedar Sharma
PhD (Civil Engineering), IIT Kanpur



Upasana Singh
MBA, PhD, IIT Kharagpur



Mohd Zubair
PhD (Mechanical Engineering), IIT Delhi



Ankur Kulshrestha
Chartered Accountant, EMP, IIM Calcutta;
Former Manager, E&Y



Devendra Bhavsar
M.Tech, IIT Bombay



Alok Kumar
Researcher, Ghent University, Belgium
PhD (Network Science), IIIT Allahabad

INSPIRING FACULTY

Faculty Body is a combination of full-time academics committed to helping students flourish in a highly-qualified academic campus environment, and a wide network of visiting experts and professionals from leading universities, centres and organizations from India and across the world

***Over 71% PhDs from
Leading institutions***

***Over 36% alumnus
of IITs, IIMs, NID
& leading foreign
institutions***

ACADEMIC ADVISORY BOARD

To strengthen the academic environment at JKLU, we have an Academic Advisory Board of eminent academics who help ensure that the University's programmes and curricula are contemporary and future-ready.



Dr. Dheeraj Sanghi

Professor of Computer Science, IIT Kanpur
Former Director of LMNIIT, Jaipur
Director, Punjab Engineering College, Chandigarh



Dr. Prabhu Aggarwal

Former Vice Chancellor of OP Jindal University
Former Professor of Management and Asst. Dean at
William & Mary University, USA President & Founder, Eduserve-global LLC



Dr. Vijay Kumar

Dean Penn Engineering and Professor
at University of Pennsylvania, USA



Prof Sunand Bhattacharya

Associate Vice Provost, Design and Innovation Strategies,
Boston College, USA;
Former Adjunct Professor, Olin College, USA



Dr. Amit Sheth

Founding Director - Artificial
Intelligence Institute, University of South Carolina;
Cofounder and Chief Advisor ezDI, LLC



Dr. Rohit Verma

Founding Provost/ Chief academic Officer, VinUniversity; Professor, School
of Hotel Admin, Cornell SC Johnson College of Business, Cornell University



Dr. Sartaj Sahni

Distinguished Professor of Computer Science, University of Florida, USA;
Member of the European Academy of Sciences; Fellow of IEEE, ACM, AAAS
and Minnesota Supercomputer Institute, IIT Kanpur



**Learning & Innovation
at the intersection of**

**DESIGN
ENGINEERING
MANAGEMENT**

INSTITUTE OF ENGINEERING & TECHNOLOGY

Pioneer of project-based cutting edge engineering education in the country.

Learn future-ready technologies

ROBOTICS & AUTOMATION



An extension of Robotics, Automation is termed as the next phase of the Industrial Revolution. It will create fresh avenues for businesses and individuals, and offers unprecedented opportunities to create and build intelligent systems that are smarter and more efficient.

ARTIFICIAL INTELLIGENCE & MACHINE LEARNING



Together with Machine Learning, an important subset, Artificial Intelligence is at the forefront of technology today. Several industries, from medicine, banking and retail, are likely to be disrupted and transformed by the future of computing.

INTERNET OF THINGS



The rapid advancement of the internet, and the new reality it has shaped by bringing together a wide range of contexts, people, processes, data and technology is an exciting frontier of change today. It touches every aspect of our lives, and understanding this new world leads to greater innovation, progress and business.

DESIGN THINKING



A human-centred approach to innovation, design thinking focuses on integrating the needs of society, technology and business. It encourages project-based pedagogy and effective frameworks for creative problem solving in all aspects of learning.

Options for multi-disciplinary majors, minors and concentrations in high-demand cutting edge areas

COMPUTER SCIENCE & ENGINEERING

Students can do concentration in Data Science, Embedded Systems & IoT, Artificial Intelligence, Software Engineering & RPA, Big Data Analytics, Cloud Computing, Information Security and receive professional certifications from IBM, Cisco, UI Path and other global organisations. Artificial Intelligence and Machine Learning are other areas of focus for the department. JKLU has its own private cloud established in association with IBM.

MECHANICAL ENGINEERING

The department boasts of the finest Automobile labs in the country with dynamic models and engine testing setups equipped with variable compression ratio testbeds. The Polymer testing lab, one of the best in India and the only one in Rajasthan, has been established in collaboration with industry. Robotics and Automation and Automobile Design & Engineering are other key areas of focus.

ELECTRICAL & ELECTRONICS ENGINEERING

Students are offered a range of electives across Power Systems, Digital Systems, Embedded Systems & Internet of Things (IoT) and Communication and Signal Processing. The University has established facilities for smart grid testing and has collaborations with CEERI, Pilani and Texas Instruments.

CIVIL ENGINEERING

The department has advanced laboratories and facilities for practical learning and experimentation and is engaged in strategic research on satellite based remote sensing of resources with a research grant from ISRO. The focus areas includes Structure Engineering, Infrastructure Engineering, Construction Management and Environment Engineering.

PROJECT BASED LEARNING WITH



At the core of student-centric programmes at JKLU is the PROJECT BASED LEARNING methodology designed with the support of Olin College of Engineering, Boston, US. Olin is ranked among the top 3 undergraduate engineering programmes in the US in 2019.



Some of the Project based learning courses

Design & Prototyping

This course is a combination of different courses like Design Thinking, Engineering Graphics, Workshop Practices and AutoCAD where students are expected to empathize, define, ideate, prototyping and perform test and are trained to analyze an unknown situation through critical thinking and formulate it into a known problem so that solutions can be found.

Calculus for Engineers

This course introduces the basic elements of calculus and Applied Mechanics through two major engineering projects and a number of in class and out class activities to help the students in formulating and solving basic engineering problem.

OPPORTUNITY TO STUDY AT IIT

JKLU is providing an unique opportunity to study one semester at IIT. So Far, 7 students have benefited from this opportunity.



“JKLU helped me to get enrolled for IIT Gandhinagar Student Exchange Programme. The learning at JKLU gave me the essential knowledge, confidence to communicate better and showcase criteria. The gap between IITians and Non- IITians got fulfilled because of the learnings I got at JKLU in past 4 years.”

Videsha Bansal | B.Tech. (Batch 2016-20)

Student

INSTITUTE OF MANAGEMENT

The Institute believes in bringing industry into the classroom with extensive participation of senior practitioners in teaching and mentoring students, a blend of case studies, studios and projects. Students take advantage of courses in technology, design, liberal arts and critical thinking to develop the skills and entrepreneurial mindset required to succeed in their chosen career.



JKLU'S FLAGSHIP MBA

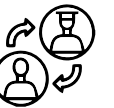
India's first multidisciplinary and experiential learning focused MBA designed to help students become creative problem solvers.

Optional certification from Wharton School
of the University of Pennsylvania, USA

Experiential projects and startup studio



Individual mentorship by senior industry leaders



Multidisciplinary learning with business,
design, technology and liberal arts



Courses Taught by Expert faculty
and senior practitioners



Personal leadership development



- **100% On-campus Placements**
- **Nearly 4 opportunities per Student**

GLOBAL MASTERS PROGRAMMES WITH UPTO 50% SCHOLARSHIP

Making high quality global education accessible to motivated students

M.S. in Data Analytics and Computational Social Science

The Data Analytics program will help develop skills relating to data-driven decision-making, manipulating and analyzing large datasets, ethical data management, evaluative data interpretation, and clear communication of data results. Possible career trajectories include analyst and consulting positions in public policy, market research, public relations, corporate communications, population studies, and survey research.

M.S. in Resource Economics

The Resource Economics program provides training in empirical microeconomics and applied econometrics. It allows concentration in fields like Environmental and Natural Resource Economics, Empirical Industrial Organization, and Experimental and Behavioural Economics. Graduates will have the ability to analyse how consumers and firms make choices, how markets behave, and what data are needed to inform decisions.

Master's in Public Policy

The M.A. in Public Policy program brings together political science, economics, statistics, management, and other social science disciplines to shape policies and programs around the globe. Students gain the knowledge, skills, and practical experience to become leaders in the non-profit, public, or private sector while creating meaningful social change. Graduates of our program are prepared for careers as policy, research, program or budget analysts in federal, state or local government or non-profit or private organizations.

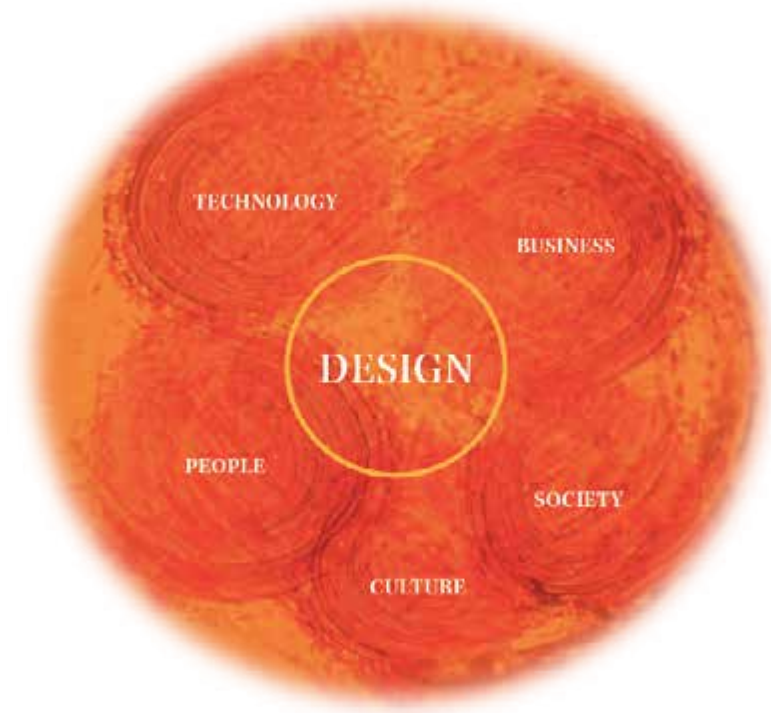
Each student got scholarship worth Rs. 20 lakhs last year from
UMASS & Lakshmipat Singhan Education Foundation (LSEF).

For details visit : www.lse.foundation



INSTITUTE OF DESIGN

Sitting at the intersection of Technology, Business, Society, Culture and People, the curriculum at JKLU draws from how students learn at world's leading design schools.



Academic Collaboration



Edinburgh Napier University, UK

Ranked 10th among modern Universities in the UK, 2020

Innovative 4-year undergraduate programmes in areas with high demand for talent

PRODUCT DESIGN

The Product Design program at JKLU uniquely combines both strategic and tactical competencies, from idea generation to commercialization, used to create a product design. Students will learn and practice systematic approaches to conceptualize and evaluate ideas, turning them into tangible inventions and products. They will experience combining art, science, and technology to create new products that people can use. Access to advanced technology, business resources and knowledge is a unique differentiator of this program at JKLU.

INTERACTION DESIGN

In this program, students will deepen their understanding of the core design discipline with a focus on interaction of users with products, services, devices and with each other. These interactions often involve elements like aesthetics, motion, sound, space, and many more.

Computers, home appliances, mobile devices, apps, all have a focus on maximizing usability and the user experience. The goal of interaction design is to make the user's interaction as simple and efficient as possible, in terms of accomplishing user goals. This is one of the most sought after skills in today's technology driven businesses around the world.

INTERDISCIPLINARY DESIGN

The Interdisciplinary design program is a unique opportunity for students who want to understand the breadth of design and explore it's various facets. It gives students a lot of flexibility to choose their courses and they can later opt to go deeper in areas that interest them or be highly valuable generalists who can work across a range of problems and situations.



MP RANJAN-JKLU DESIGN RESOURCE CENTRE

The MP Ranjan - JKLU Design Resource Centre, situated at the heart of JK Lakshmipat University aims to make available the personal collection of books of prof. MP Ranjan, erstwhile principal designer at the National Institute of Design, Ahmedabad.

The centre has been built with the gorgeous collection from Ranjan's family. With over 1200 books on wide subject range, the MP Ranjan - JKLU Design Resource Centre aims to cater to the design community and everybody else interested in design.



THOUGHTSPOT

Thoughtspot is a stage that welcomes people from diverse disciplines and culture to share their unique stories, experiences and journeys. Being a global platform, Thoughtspot enables speakers, personalities and eminent professionals around the world, to connect for sharing ideas and stories to inspire others in turn. This initiative by JK Lakshmipat University has been taken to create more engagement with students, professionals, culturists, curators and academicians on a larger scale and providing them a platform for curating knowledge to increase visibility among global shapers and thinkers, establishing University's core values that mainly revolves around innovation and collaboration.

PLACEMENTS



JKLU In 2019-20

More than 100% Increase in Opportunities for Students

100% On campus Placement for MBA Students

4 Startups launched by students while on campus

100% Placements in Practice school - 2

98.21% Placements for Engineering Students in 2018-19

(2019-20 Placements underway)

SOME OF OUR RECRUITERS



ATAL INCUBATION CENTRE - JKLU

In 2018, JKLU was selected by Niti Aayog for the establishment of an Atal Innovation Centre. AIC-JKLU's vision is to develop an incubation center which fosters dynamic needs of the entrepreneurs in 2tier and 3tier cities, not only in Rajasthan but across India through it's hybrid incubation programs. It is a sector agnostic incubator and it also runs thematic incubator programmes.

Incubated Start-up : 21 associated startups

Host of Startup Masterclass with IIT Kanpur Alumnus Association



Associated Investing funds & organisations :



Students have special and preferred access to AIC-JKLU resources

Mentor Associated

Amit Varma

President-Corporate
Strategy, JK Organisation

Priyank Narayan

Director, Entrepreneurship
Programmes, Ashoka University

Ambrish Kumar

Commissioner & Special
Secretary DoIT, GOR

Arun Singhal

Managing Director,
Technology, Accenture

Asheesh Beergi

Founder Mash Foundation

CENTRES OF EXCELLENCE

Creating opportunities for students to develop cutting edge capabilities, working with Industry and expanding horizons through research



CENTRE FOR COMMUNICATION AND CRITICAL THINKING

The CCCT at JKLU is a space that helps in creating a cadre of professionals who are gearing up to be problem solvers of tomorrow. It is one of the many innovations in technical and management education at the University and plays an important part in the learning journey of our students.

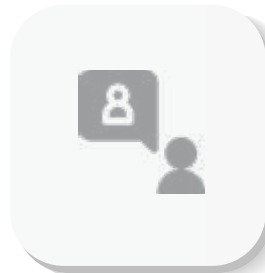
CCCT Partners with Students to help them:



Communicate effectively & with structure, both written & verbal



Identity, construct, evaluate & articulate arguments persuasively



Understand the connection, relevance and importance of ideas; appreciate different perspectives.



Reflect on the justification of one's own beliefs & values.

The Centre uses the constructs of liberal arts, scientific temper, written expression and interpersonal communication to inculcate and develop the ability for critical thought. It works with students alongside their programme through credit courses, workshops, one-on-one sessions and consultations to specific needs.

CENTRE FOR DESIGN RESEARCH

The Institute of Design has set up the Centre for Design Research to take on professional research and consulting projects in all areas of Design.

The Centre brings professional projects to the classroom and bring an academic rigour to professional assignments. It is in the cusp of a research lab, a professional studio and the classroom. The Centre works on assignments from industries and businesses that require an academic and research rigour. It conducts awareness workshops to all stake-holders to perpetuate the cause of design. It leads research activities in design for the public good. The centre Involves interested students in professional design assignments and documentation. The knowledge gained from the field is ploughed back into the curriculum.



CENTRE FOR DATA SCIENCES

The Centre for Data Sciences reflects JKLU's focus on emerging areas that are impacting business and work across sectors. The centre has competencies in developing Analytics Solutions and data sciences approaches in areas such as fraud analytics, sensor analytics, business intelligence, marketing analytics, predictive analytics, data visualization, IoT streaming analysis etc.



CENTRE FOR OPERATIONS EXCELLENCE

The Centre for Operations Excellence is a multi-disciplinary centre with capabilities in supply chain, manufacturing and service operations.

The Centre works closely with industry in solving real problems, pursuing opportunities for the faculty and students to engage in consulting and help bring practical knowledge and experience to classrooms and research.



Life @JKLU



Located along the six-lane Jaipur - Ajmer expressway, within city limits of Jaipur The 30 acre campus in a modern, environmentally conscious and inviting space designed to help students live, work and play in a setting that is safe, productive and student centric. The Campus offers separate living facilities for male female students. The residential Management Development Centre is equipped to host industry practitioners, Visiting faculty and other guests.





MAJOR STUDENT CLUBS

Anunaad	Music
Steppers Squad	Dance
Finanza	Finance
Rangmanch	Drama
ARC	Robotics
The Shade	Photography
The Inquisitors	Quiz
The Parlance	Debate
Spectrum	Design
Sportivo	Sports
Technosmart	Coding





We, at JKLU, care about the mental health and wellbeing of our students, in addition to ensuring a good student life and academic life at the campus for them.

For this, we provide our students assistance for emotional wellbeing. We give students 24X7 access to **qualified counsellors**, free of cost, with complete confidentiality and anonymity. It helps students resolve their stress, create healthy relationships, develop a more focused approach towards achieving their goal, build confidence, and develop the ability to deal with the pressure of all kinds.



ADMISSIONS

COURSES OFFERED

B.Tech. Computer Science Engineering

Concentrations:

Data Science | Big Data & Analytics* | Cloud Computing* | Information Security* | Software Engineering & Robotic Process Automation | Artificial Intelligence | Embedded Systems & IoT

Electrical and Electronics Engineering

Concentrations:

Embedded Systems and IoT | Digital Systems | Communication & Signal processing | Power Systems

Mechanical Engineering

Concentrations:

Automation & Robotics | Automobile Design & Engineering

Civil Engineering

Concentrations:

Structure Engineering | Construction Management | Environmental Engineering | Infrastructure Engineering

BBA

Concentrations:

Entrepreneurship | Banking and Financial Services

B.Des.

Product Design | Interaction Design | Interdisciplinary Design

*in collaboration with IBM

PG DIPLOMA

Data Analytics

M.Tech.

Data Science | Automation & Robotics | Health, Safety and Environment | Embedded Systems and IOT

MBA

Students can choose their electives from a variety of areas, including:

Finance | Marketing | Human Resource | Operations Management | International Business
| Information Technology | Logistics & Supply Chain Management | Financial Analytics* |
Digital Marketing & Analytics

MA

Public Policy

M.Sc.

Resource Economics | Computational and Social Science

PhD

Engineering | Management | Applied Sciences

*in collaboration with Moody's Analytics

SCHOLARSHIPS AND FINANCIAL AID

JKLU offers upto 100% Scholarships & Financial aid to students based on performance and need.

Merit Scholarships

Scholarships from 25% to 100% of tuition fees are offered to meritorious students based on their Class XII examination scores, in the first year of undergraduate study.

Top 10% of the students who obtain a CGPA of 8.0 and above in a programme are awarded scholarships equivalent to 25% to 75% of the tuition fees in subsequent years.

Merit cum means scholarships

A limited number of merit-cum-means scholarships, equivalent to 25% of the tuition fees are awarded to students whose parental income is below Rs. 3 lakhs per annum and who obtain a CGPA of 7.0 and above.

On campus opportunities

The university also offers opportunities for on-campus assistantships and part-time jobs to exceptional students.

FEE STRUCTURE

INSTITUTE OF ENGINEERING & TECHNOLOGY

B.Tech.

Eligibility	:	10 + 2 with PCM Minimum 50% marks (45% for SC/ST candidates)
Qualifying exam	:	Through JEE/JKLU-EET
Course fees*	:	Rs 89,100 per semester [Additional fee of Rs. 12,500 per semester will apply for specialisations]

M.Tech.

Eligibility	:	Undergraduate Engineering degree Minimum 50% marks (45% for SC/ST candidates)
Qualifying exam	:	GATE score preferred
Course fees*	:	Rs 68,000 per semester

PG Diploma

Eligibility	:	60% marks in Graduation (Maths/CS/IT/CA/Statistics/OR/Physics/ Electronics/Instrumentation/ Economics/Commerce)
Course Fees	:	68,000 per semester

INSTITUTE OF MANAGEMENT

BBA

Eligibility	:	10 + 2 (any stream) Minimum 50% marks (45% for SC/ST candidates)
Course fees*	:	Rs 48,600 per semester [Additional course fees of Rs. 17,500 per semester will apply for candidates]

MBA

Eligibility	:	3-year undergraduate degree in any discipline Minimum 50% marks (45% for SC/ST candidates)
Qualifying exam	:	CAT, XAT, GMAT, NMAT, MAT, ATMA, CMAT or JKLU-MET
Course fees*	:	Rs 1,54,000 per half-year term [This fee includes the Pinnacle Scholarship of Rs. 1,50,000 per annum]

INSTITUTE OF DESIGN

B.DES.

Eligibility	:	10 + 2 (any stream) Minimum 50% marks (45% for SC/ST candidates)
Course fees*	:	Rs 1,01,600 per semester

HOSTEL**

Non AC room***	:	Rs. 29,250 per semester
AC room***	:	Rs. 32,500 per semester
Mess advance	:	Rs. 26,000 (To be adjusted as per actuals) per semester

TRANSPORT FACILITY

Applicable if the student wishes to avail the JKLU transport facility from Jaipur city to JKLU campus on specified routes

- * Fees per half-yearly semester for students admitted in academic year 2020-21. Please check website or call for fee structure for next year. Additional fees may apply for certain specialisations.
- * * Hostel rooms are on twin sharing basis. Hostel Charges are subject to yearly revision.
- * * * Utility charges of Rs. 1,250/- for regular room and Rs. 10,000/- for AC room extra.

Note: Refundable Caution Money of Rs. 10,000 and Hostel Security Deposit of Rs. 5,000 would be payable along with first year's fees, It is refundable at the time of leaving the Hostel.

OUR LEGACY

Our optimism for the future is guided by, and built on, the strong foundations of the past. The JK Organisation is one of India's most respected nation builders and has a proud history of being committed to India's potential for growth and progress for nearly 125 years. It has successful businesses across a range of industries, including JK Tyre, JK Paper, JK Lakshmi Cement, JK Agri Genetics and JK Fenner India. JKLU is a proud member of this heritage, as a philanthropic initiative of the Lakshmipat Singhanian Education



Led by its key architect, the Late Lala Lakshmipat Singhanian (1910-1976), who was inspired and driven to create India's intellectual capital, JK Organisation has been at the forefront of philanthropic initiatives in education and healthcare.

Late Harishankar Singhanian (1933-2013) ably carried forward the legacy of inspiration and commitment to education, as President (Chairman) of the JK Organisation, as well as the Chancellor of JKLU.

The vision and mission of the founders continues to be the bedrock of the university's ethos and its promise to play a significant role as a nation builder.



“At JKLU, we want to bring together best-practices from academia around the world and many innovations that I have seen to be successful in my experience of creating world-class institutions in India.”

Dr. Pramath Raj Sinha

Member, Board of Management, JKLU

Founding Dean, ISB Hyderabad; Founding Trustee, Ashoka University

“We are building a university where students are at the centre of everything we do. Our faculty and administration are continuously innovating and our academic facilities, curriculum, residences are rapidly evolving to help our students become successful in life.”

Asheesh Gupta

Pro Vice-Chancellor

Former Consultant at McKinsey & Company and Director of McKinsey's Knowledge and Research

Centres in India



BOARD OF MANAGEMENT

(External Members)

Shri Bharat Hari Singhania

President, JK Organisation
Chancellor, JK Lakshmipat University

Dr. R.P. Singhania

Chairman & Managing Director
JK Tyre & Industries Ltd.
Pro Chancellor, JK Lakshmipat University

Prof. M.S. Ananth

Former Director IIT Madras
Chairman, IIITDM, Kancheepuram

Shri H.P. Singhania

Vice Chairman & Managing Director
JK Paper Ltd.

Dr. Pritam Singh

Former Director, IIM Lucknow
Former Director, MDI

Shri Pratip Chaudhuri

Former Chairman
State Bank of India

Shri S.K. Roongta

Former CMD, Steel Authority of India

Shri Surendra Malhotra

Former MD, Orissa Synthetics Limited

Smt. Vinita Singhania

Vice Chairman & Managing Director
JK Lakshmi Cement Ltd.

Shri S.A. Bidkar

Chief Financial Officer
JK Lakshmi Cement Ltd.

Dr. Pramath Raj Sinha

Founding Dean, ISB Hyderabad
Founding Trustee, Ashoka University
Founder & MD, 9.9 Group

Shri Sanjay Jain

Former Managing Director
Global Capability Network, Accenture

Shri Ajay Shankar

IAS
Former Secretary (Industry) to Government of India

Shri Pradeep Kumar Borad

IAS
Commisssioner, College Education & Spl Secy,
Higher Education, Govt of Rajasthan

CONTACT INFO

Campus

Near Mahindra SEZ, Ajmer Road,
Jaipur - 302026, Rajasthan, India

Admission Office

Helpline No.	:	+91 830 222 3344
Toll Free	:	1800 1234 805
Phone	:	+91 141 7107 530/31
Email	:	admissions@jklu.edu.in

Administrative office

Phone	:	+91 141 7107 500
-------	---	------------------





A Philanthropic initiative of the JK Organisation
Supported by:



Toll free no.: 1800 1234 805
www.jklu.edu.in